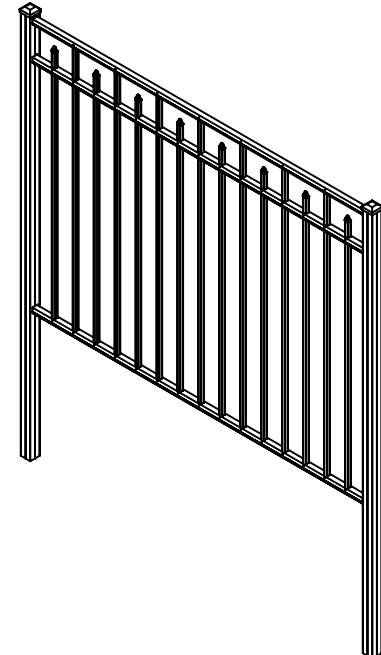
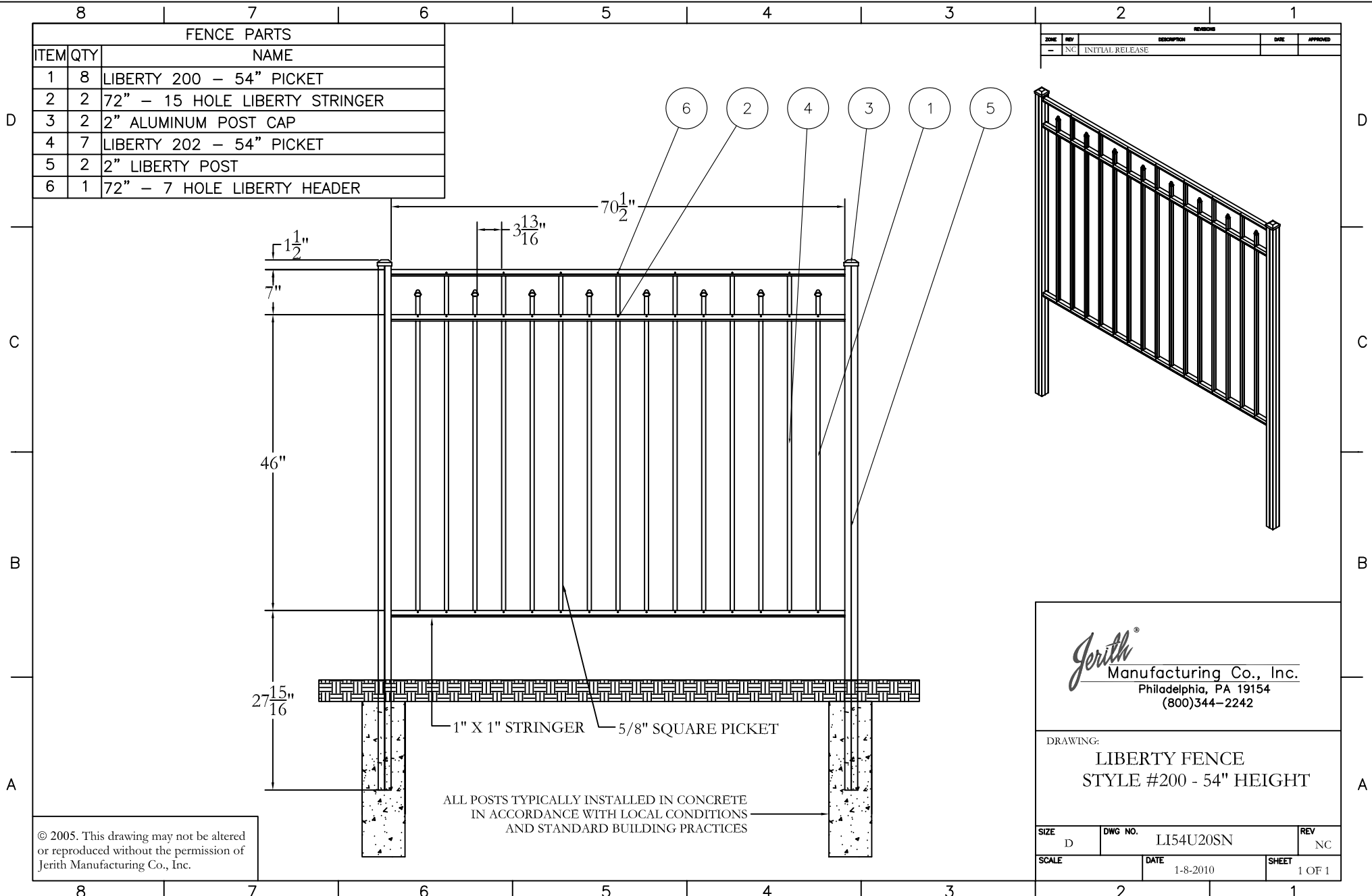


FENCE PARTS		
ITEM	QTY	NAME
1	8	LIBERTY 200 - 54" PICKET
2	2	72" - 15 HOLE LIBERTY STRINGER
3	2	2" ALUMINUM POST CAP
4	7	LIBERTY 202 - 54" PICKET
5	2	2" LIBERTY POST
6	1	72" - 7 HOLE LIBERTY HEADER

ZONE	REV	DESCRIPTION	DATE	APPROVED
-	NC	INITIAL RELEASE		



Jerith[®]
 Manufacturing Co., Inc.
 Philadelphia, PA 19154
 (800)344-2242

DRAWING:
 LIBERTY FENCE
 STYLE #200 - 54" HEIGHT

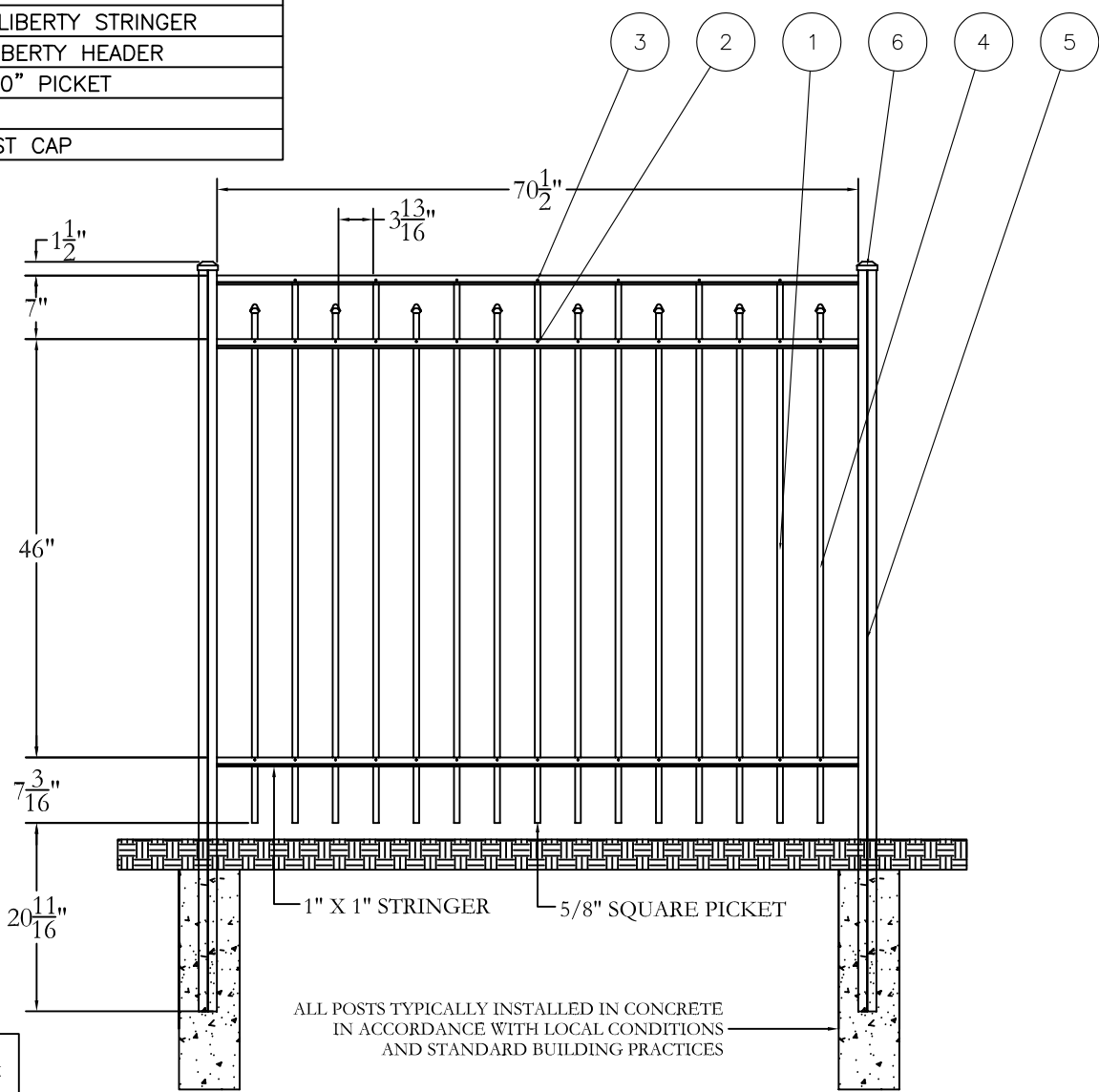
SIZE D	DWG NO. LI54U20SN	REV NC
SCALE	DATE 1-8-2010	SHEET 1 OF 1

© 2005. This drawing may not be altered or reproduced without the permission of Jerith Manufacturing Co., Inc.

ALL POSTS TYPICALLY INSTALLED IN CONCRETE IN ACCORDANCE WITH LOCAL CONDITIONS AND STANDARD BUILDING PRACTICES

FENCE PARTS		
ITEM	QTY	NAME
1	7	LIBERTY 202 - 60" PICKET
2	2	72" - 15 HOLE LIBERTY STRINGER
3	1	72" - 7 HOLE LIBERTY HEADER
4	8	LIBERTY 200 - 60" PICKET
5	2	2" LIBERTY POST
6	2	2" ALUMINUM POST CAP

ZONE	REV	DESCRIPTION	DATE	APPROVED
-	NC	INITIAL RELEASE		



1" X 1" STRINGER 5/8" SQUARE PICKET

ALL POSTS TYPICALLY INSTALLED IN CONCRETE
IN ACCORDANCE WITH LOCAL CONDITIONS
AND STANDARD BUILDING PRACTICES

Jerith[®]
Manufacturing Co., Inc.
Philadelphia, PA 19154
(800)344-2242

DRAWING:
LIBERTY FENCE
STYLE #200 - 60" HEIGHT

SIZE D	DWG NO. LI60U20SN	REV NC
SCALE	DATE 1-8-2010	SHEET 1 OF 1

© 2005. This drawing may not be altered or reproduced without the permission of Jerith Manufacturing Co., Inc.