

FENCE PARTS		
ITEM	QTY	NAME
1	1	72" - 15 HOLE LIBERTY HEADER
2	2	2" LIBERTY POST
3	15	LIBERTY 202 - 54" PICKET
4	2	72" - 15 HOLE LIBERTY STRINGER
5	2	2" ALUMINUM POST CAP

ZONE	REV	DESCRIPTION	DATE	APPROVED
-	NC	INITIAL RELEASE		

D

C

B

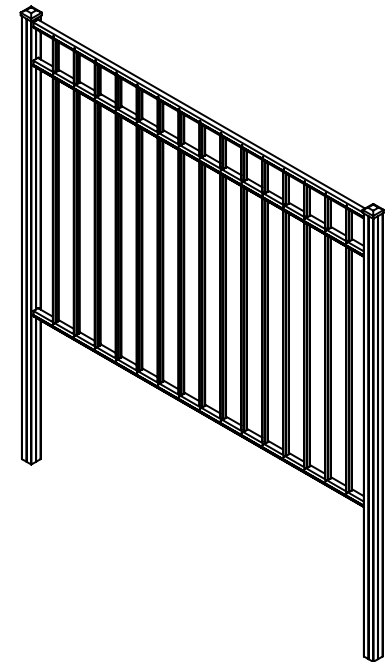
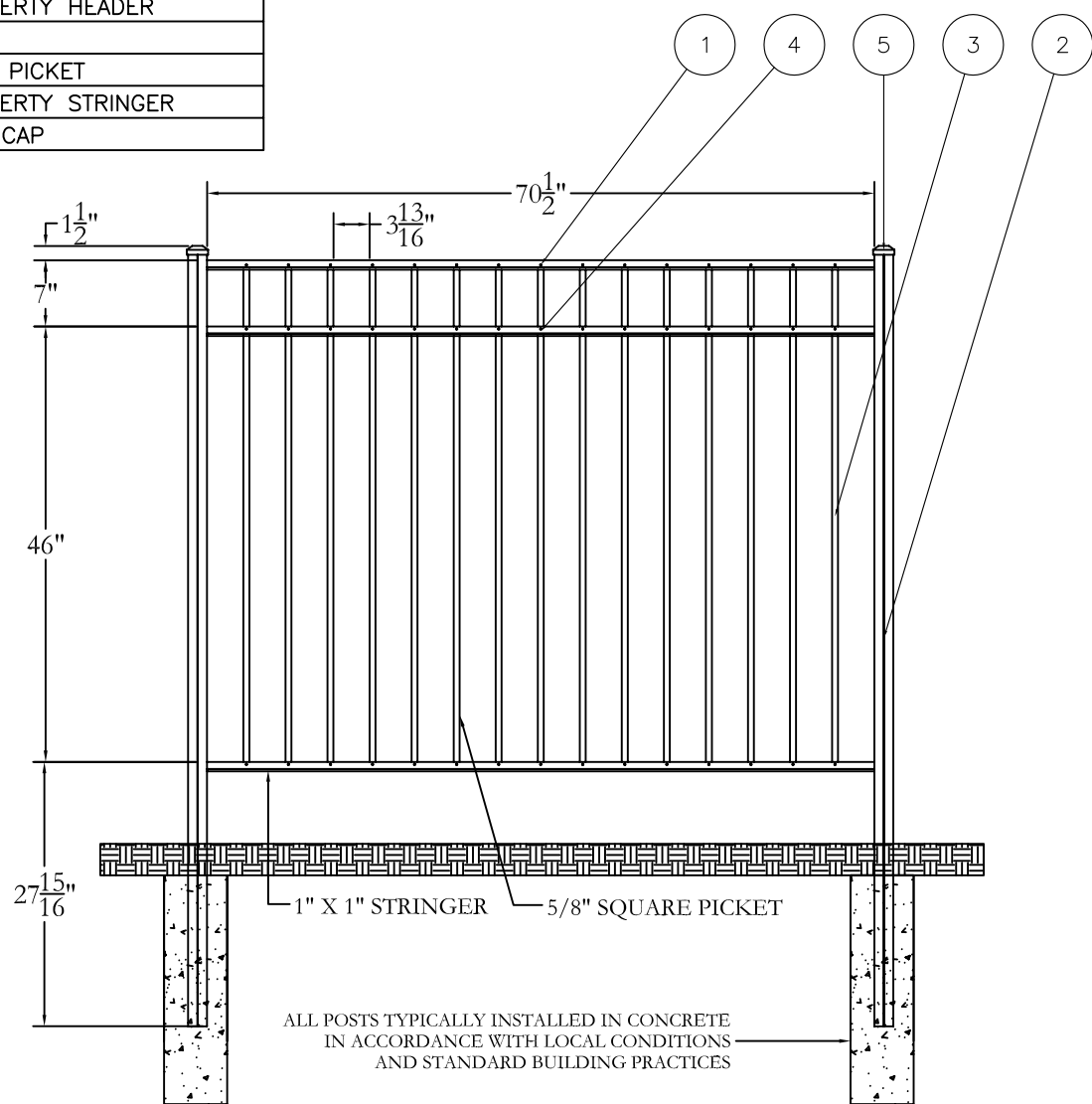
A

D

C

B

A



Jerith[®]
 Manufacturing Co., Inc.
 Philadelphia, PA 19154
 (800)344-2242

DRAWING:
LIBERTY FENCE
STYLE #202 - 54" HEIGHT

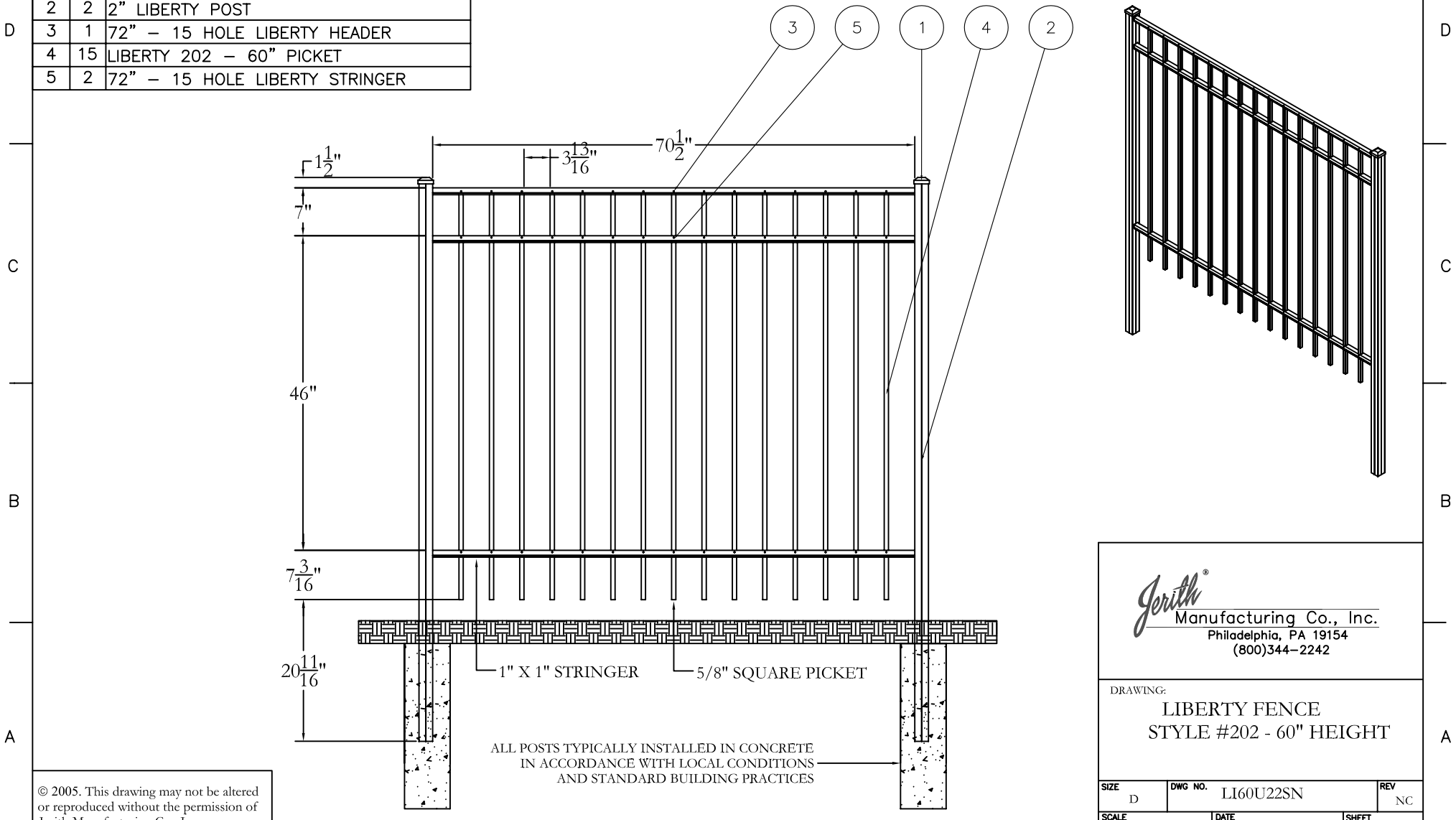
ALL POSTS TYPICALLY INSTALLED IN CONCRETE
 IN ACCORDANCE WITH LOCAL CONDITIONS
 AND STANDARD BUILDING PRACTICES


© 2005. This drawing may not be altered
 or reproduced without the permission of
 Jerith Manufacturing Co., Inc.

SIZE D	DWG NO. LI54U22SN	REV NC
SCALE	DATE 1-8-2010	SHEET 1 OF 1

FENCE PARTS		
ITEM	QTY	NAME
1	2	2" ALUMINUM POST CAP
2	2	2" LIBERTY POST
3	1	72" - 15 HOLE LIBERTY HEADER
4	15	LIBERTY 202 - 60" PICKET
5	2	72" - 15 HOLE LIBERTY STRINGER

ZONE	REV	DESCRIPTION	DATE	APPROVED
-	NC	INITIAL RELEASE		




Jerith[®] Manufacturing Co., Inc.
 Philadelphia, PA 19154
 (800)344-2242

DRAWING:
LIBERTY FENCE
STYLE #202 - 60" HEIGHT

SIZE D	DWG NO. LI60U22SN	REV NC
SCALE	DATE 1-8-2010	SHEET 1 OF 1

© 2005. This drawing may not be altered or reproduced without the permission of Jerith Manufacturing Co., Inc.