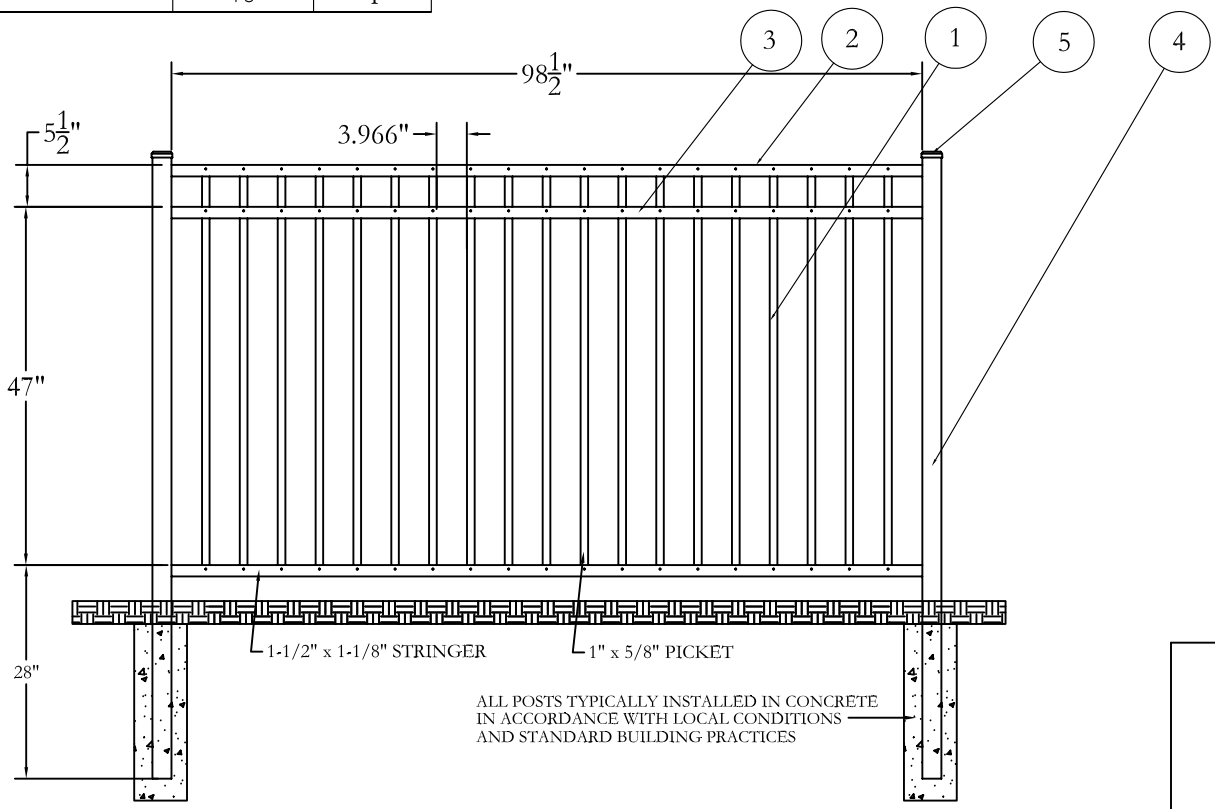


| FENCE PARTS | | |
|----------------------------------|-----|------|
| Name | Qty | Item |
| 100-1/2" - 19 HOLE AERO STRINGER | 2 | 3 |
| 2-1/2" POST | 2 | 4 |
| 2-1/2" ALUMINUM POST CAP | 2 | 5 |
| 100-1/2" - 19 HOLE AERO HEADER | 1 | 2 |
| AERO ELBA PICKET | 19 | 1 |

| ZONE | REV | DESCRIPTION | DATE | APPROVED |
|------|-----|-----------------|----------|----------|
| - | NC | INITIAL RELEASE | 04/18/14 | DSD |



ALL POSTS TYPICALLY INSTALLED IN CONCRETE
IN ACCORDANCE WITH LOCAL CONDITIONS
AND STANDARD BUILDING PRACTICES

Jerith[®]
Manufacturing Co., Inc.
Philadelphia, PA 19154
(800) 344-2242

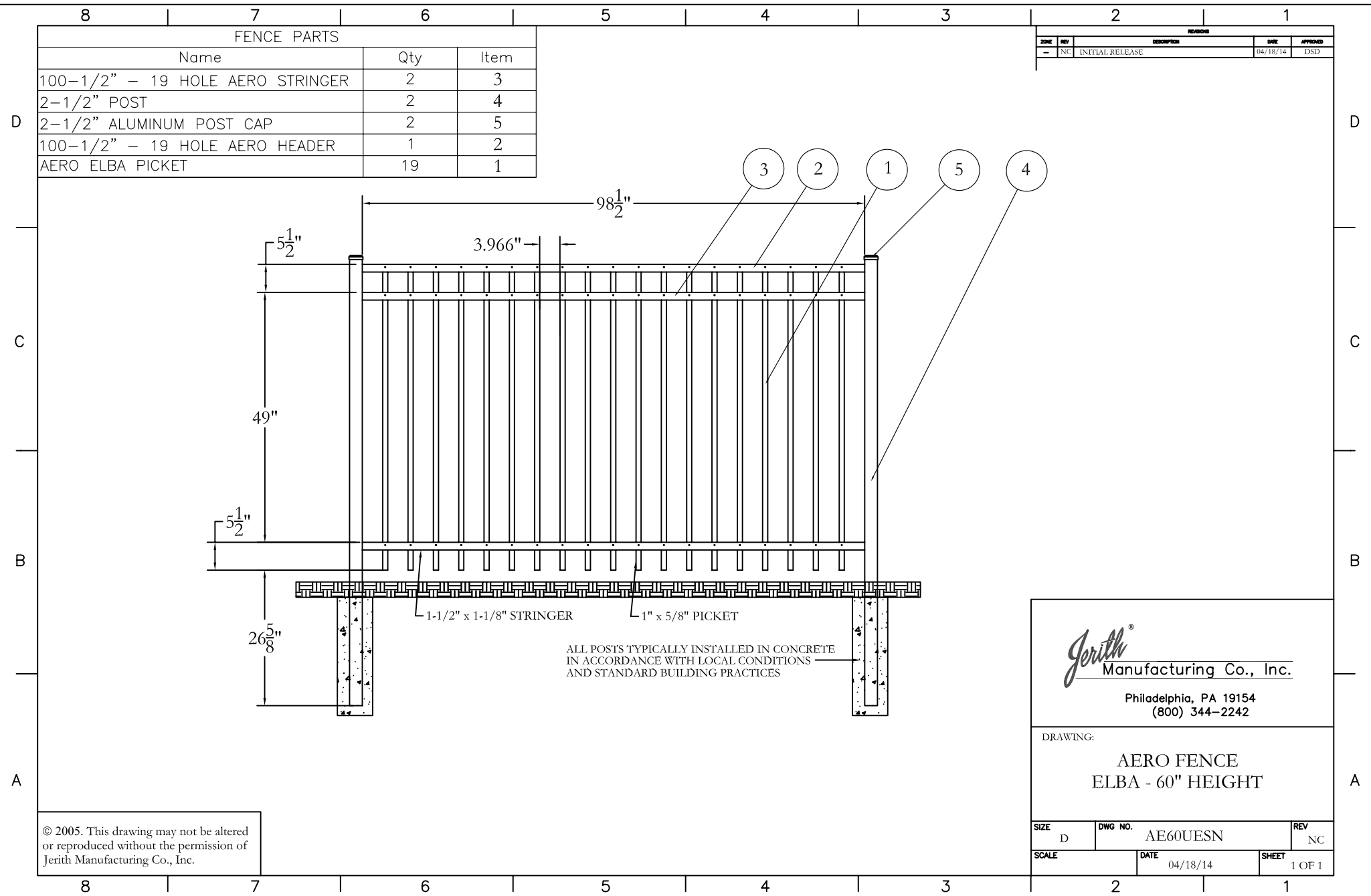
DRAWING:
AERO FENCE
ELBA - 54" HEIGHT

| | | |
|-----------|---------------------|-----------------|
| SIZE D | DWG NO. AE54UESN | REV NC |
| SCALE | DATE 04/18/14 | SHEET 1 OF 1 |

© 2005. This drawing may not be altered
or reproduced without the permission of
Jerith Manufacturing Co., Inc.

| FENCE PARTS | | |
|----------------------------------|-----|------|
| Name | Qty | Item |
| 100-1/2" - 19 HOLE AERO STRINGER | 2 | 3 |
| 2-1/2" POST | 2 | 4 |
| 2-1/2" ALUMINUM POST CAP | 2 | 5 |
| 100-1/2" - 19 HOLE AERO HEADER | 1 | 2 |
| AERO ELBA PICKET | 19 | 1 |

| ZONE | REV | DESCRIPTION | DATE | APPROVED |
|------|-----|-----------------|----------|----------|
| - | NC | INITIAL RELEASE | 04/18/14 | DSD |



Jerith[®]
 Manufacturing Co., Inc.
 Philadelphia, PA 19154
 (800) 344-2242

DRAWING:
 AERO FENCE
 ELBA - 60" HEIGHT

| | | |
|-----------|---------------------|-----------------|
| SIZE D | DWG NO. AE60UESN | REV NC |
| SCALE | DATE 04/18/14 | SHEET 1 OF 1 |

© 2005. This drawing may not be altered or reproduced without the permission of Jerith Manufacturing Co., Inc.