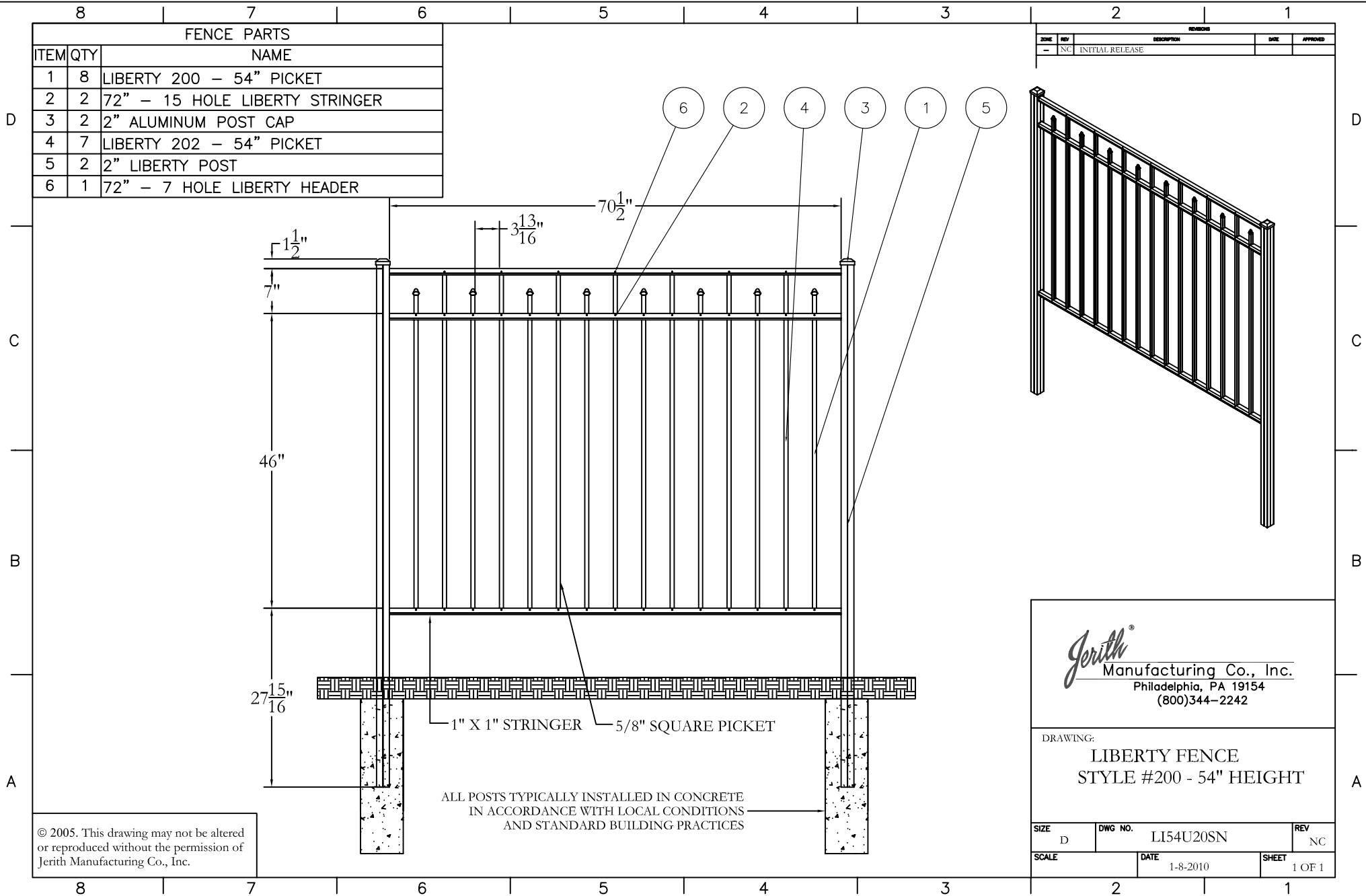


FENCE PARTS		
ITEM	QTY	NAME
1	8	LIBERTY 200 - 54" PICKET
2	2	72" - 15 HOLE LIBERTY STRINGER
3	2	2" ALUMINUM POST CAP
4	7	LIBERTY 202 - 54" PICKET
5	2	2" LIBERTY POST
6	1	72" - 7 HOLE LIBERTY HEADER

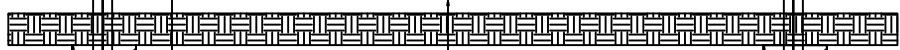
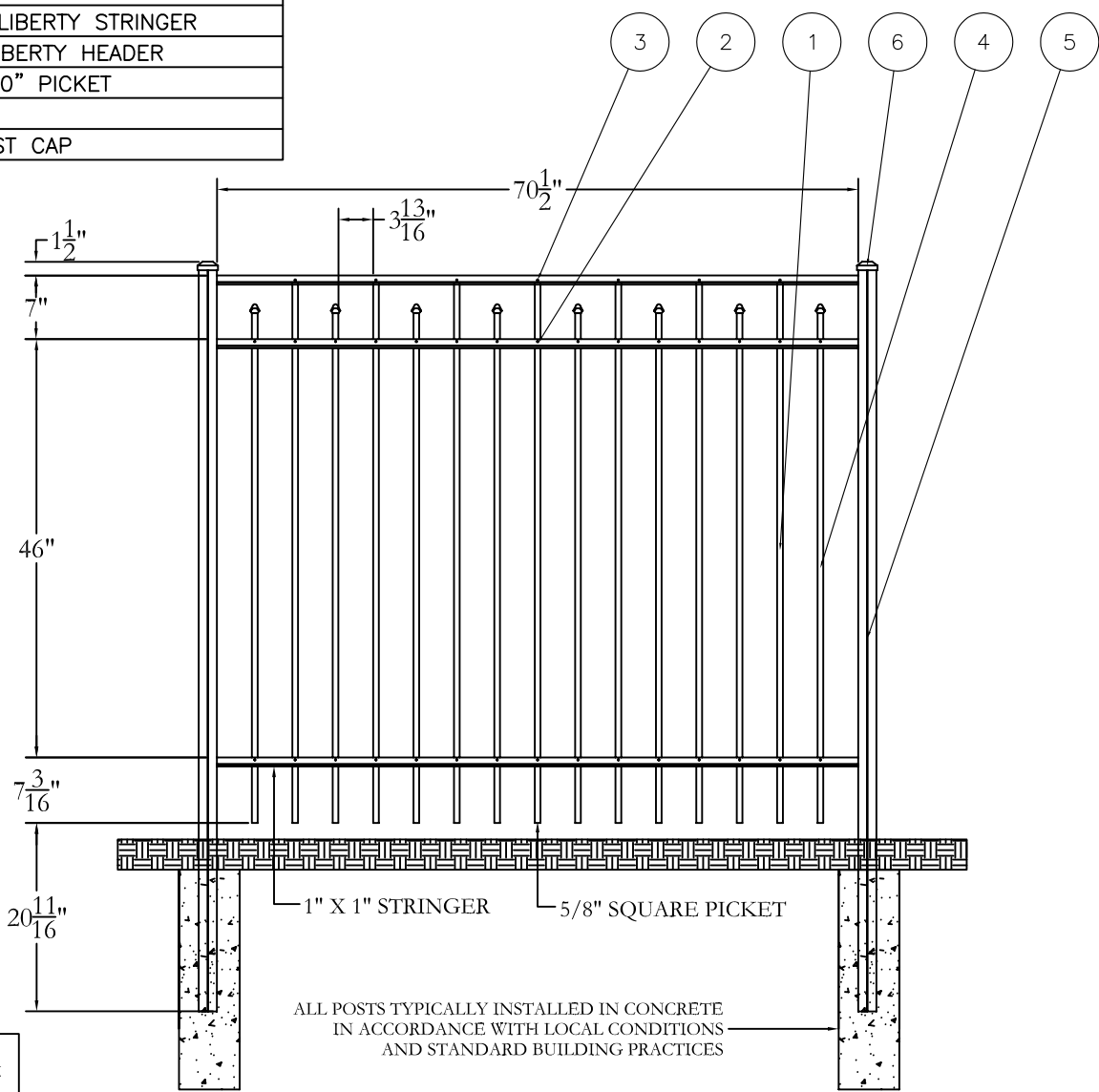
ZONE	REV	DESCRIPTION	DATE	APPROVED
-	NC	INITIAL RELEASE		



© 2005. This drawing may not be altered or reproduced without the permission of Jerith Manufacturing Co., Inc.

FENCE PARTS		
ITEM	QTY	NAME
1	7	LIBERTY 202 - 60" PICKET
2	2	72" - 15 HOLE LIBERTY STRINGER
3	1	72" - 7 HOLE LIBERTY HEADER
4	8	LIBERTY 200 - 60" PICKET
5	2	2" LIBERTY POST
6	2	2" ALUMINUM POST CAP

ZONE	REV	DESCRIPTION	DATE	APPROVED
-	NC	INITIAL RELEASE		



ALL POSTS TYPICALLY INSTALLED IN CONCRETE  
IN ACCORDANCE WITH LOCAL CONDITIONS  
AND STANDARD BUILDING PRACTICES

*Jerith*<sup>®</sup>  
Manufacturing Co., Inc.  
Philadelphia, PA 19154  
(800)344-2242

DRAWING:  
LIBERTY FENCE  
STYLE #200 - 60" HEIGHT

SIZE D	DWG NO. LI60U20SN	REV NC
SCALE	DATE 1-8-2010	SHEET 1 OF 1

© 2005. This drawing may not be altered or reproduced without the permission of Jerith Manufacturing Co., Inc.